

## Unidades exteriores expansión directa de refrigerante variable VRF

# AV5 7-80 (TR)

Heat Pump 220V, 3Ph, 60Hz / 460V, 3Ph, 60Hz

Potencia 25 ÷ 276,0 kW

### Wide Capacity Range

Starting at 8HP, capacity increases in 2HP increments up to 88HP, which is optimized design for small to large buildings.

8-12HP



14-22HP



16-44HP



24-66HP



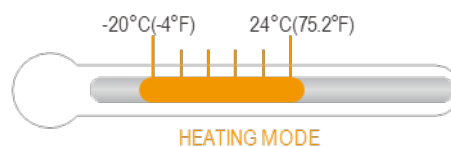
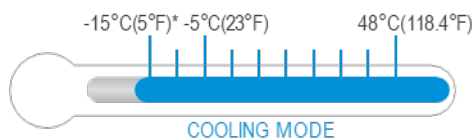
32-88HP



### Wide Operating Temperature Range

The V5X VRF can operate stably in a wide ambient temperature range: from -15°C(5°F)\* to 48°C(118.4°F) in cooling mode and from -20°C(-4°F) to 24°C(75.2°F) in heating mode.

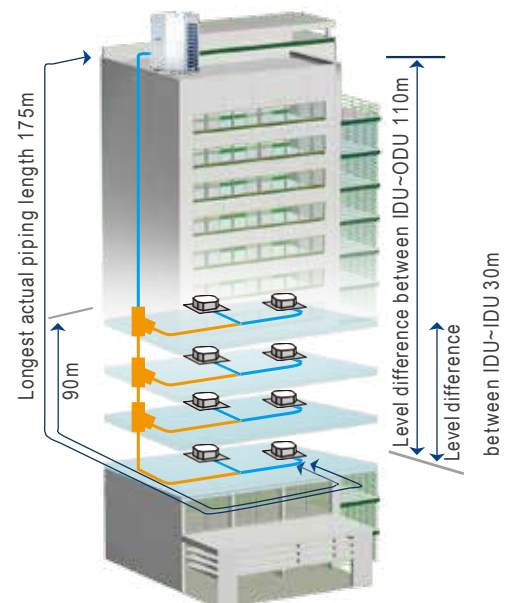
\* Cooling operation at -15°C(5°F) is available as a customization option.



### Long Piping Capability

Piping length	Capability (m(ft.))
Total piping length	1000(3280)
Longest piping length-actual/equivalent	175/200(574/656)
Longest piping length after first branch	40/90*(131.2/295.2)
Largest level difference between IDUs and ODU-ODU up/down	90/110(131.2/360.8)
Largest level difference between IDUs	30(98.4)

\*The longest length after first branch is 40m(131.2ft.) as standard but can be extended to up to 90m(295.2ft.) under certain conditions. Please contact your local dealer for further information.



# AV5 7-80 (TR)

Heat Pump 220V, 3Ph, 60Hz / 460V, 3Ph, 60Hz

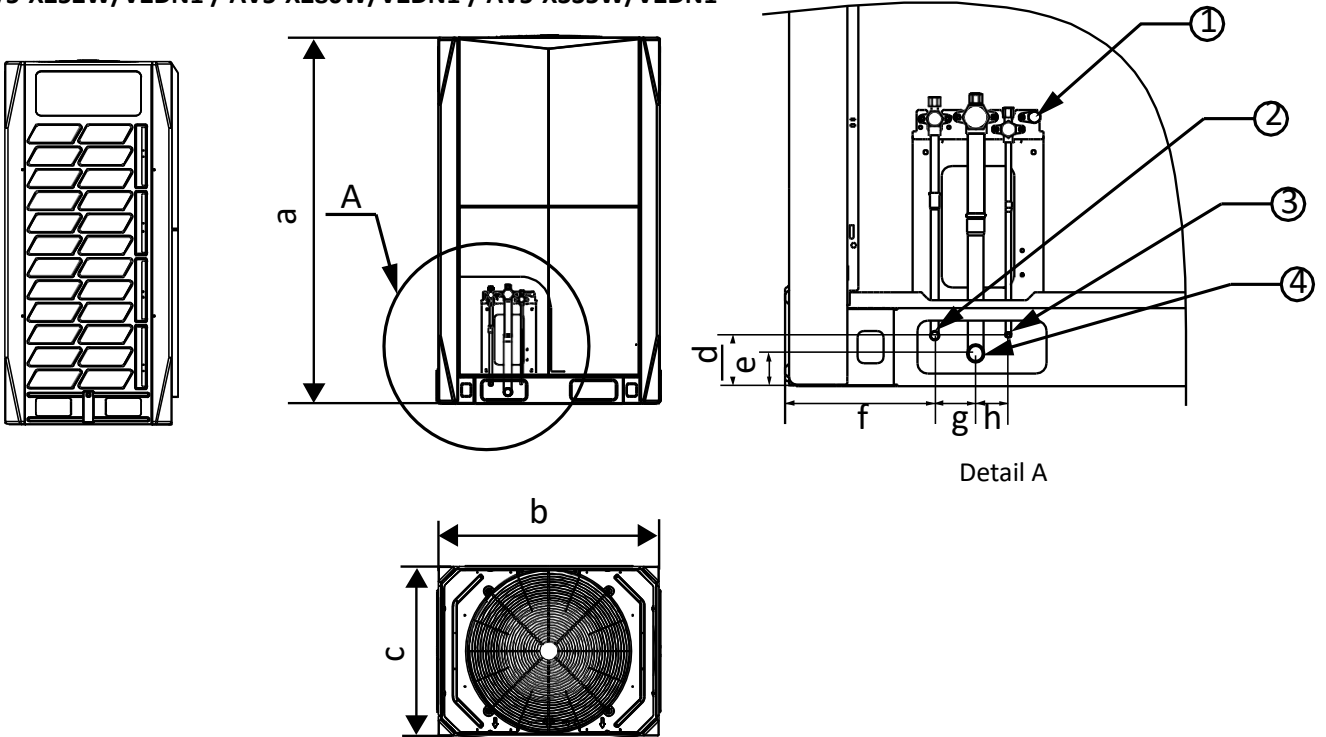
## Unidades exteriores expansión directa de refrigerante variable VRF

Potencia 25 ÷ 276,0 kW

### Dimensions

#### Single Units

AV5-X252W/V2DN1 / AV5-X280W/V2DN1 / AV5-X335W/V2DN1



Legend		
No.	Parts name	Remarks
1	Check port	The check port is used to measure system pressure, charge refrigerant and vacuumize the system.
2	Liquid pipe connection port	Φ12.7mm (Φ1/2in.) brazed connection on MV5-X252W/V2DN1 / MV5-X280W/V2DN1 Φ15.9mm (Φ5/8in.) brazed connection on MV5-X335W/V2DN1
3	Oil balance pipe connection port	The oil balance pipe runs between outdoor units. Φ8mm (Φ5/16in.) brazed connection.
4	Gas pipe connection port	Φ25.4mm (Φ1in.) brazed connection on MV5-X252W/V2DN1 / MV5-X280W/V2DN1 Φ28.6mm (Φ1-1/8in.) brazed connection on MV5-X335W/V2DN1

Table2-2.1: AV5-X252(280, 335)W/V2DN1 dimensions

Dimensions (unit: mm (in.))	
a	1635 (64-3/8)
b	990 (39)
c	790 (31-1/8)
d	77 (3-1/32)
e	50 (1-15/16)
f	229 (9)
g	63 (2-1/2)
h	50 (1-15/16)

## Unidades exteriores expansión directa de refrigerante variable VRF

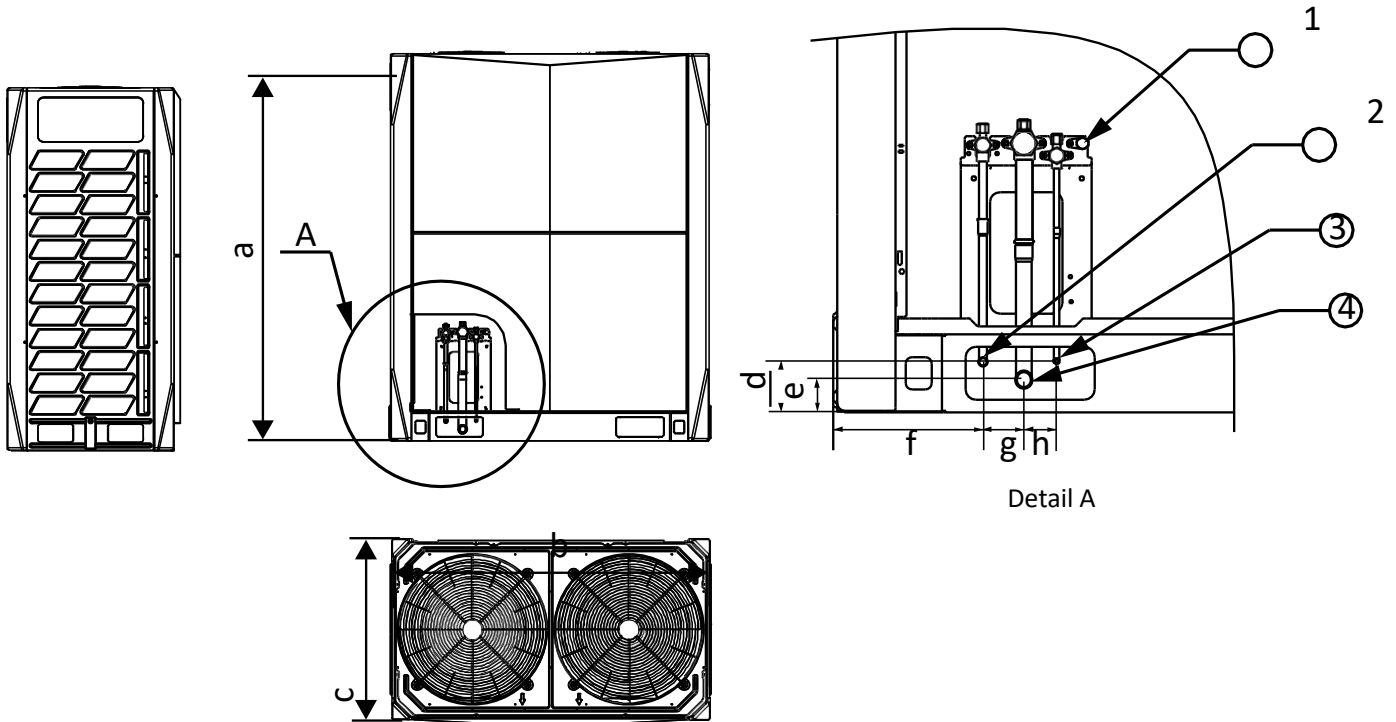
### AV5 7-80 (TR)

Heat Pump 220V, 3Ph, 60Hz / 460V, 3Ph, 60Hz

Potencia 25 ÷ 276,0 kW

#### Dimensions

AV5-X400W/V2DN1 / AV5-X450W/V2DN1 / AV5-X500W/V2DN1 / AV5-X560W/V2DN1 / AV5-X615W/V2DN1



Legend		
No.	Parts name	Remarks
1	Check port	The check port is used to measure system pressure, charge refrigerant and vacuumize the system.
2	Liquid pipe connection port	Φ15.9mm (Φ5/8in.) brazed connection on MV5-X400W/V2DN1 / MV5-X450W/V2DN1 Φ19.1mm (Φ3/4in.) brazed connection on MV5-X500W/V2DN1 / MV5-X560W/V2DN1 / MV5-X615W/V2DN1
3	Oil balance pipe connection port	The oil balance pipe runs between outdoor units. Φ8mm (Φ5/16in.) brazed connection.
4	Gas pipe connection port	Φ31.8mm (Φ1-1/4in.) brazed connection on MV5-X400W/V2DN1 / MV5-X450W/V2DN1 / MV5-X500W/V2DN1 / MV5-X560W/V2DN1 / MV5-X615W/V2DN1

Table2-2.2: AV5-X400(450, 500, 560, 615)W/V2DN1 dimensions

Dimensions (unit: mm (in.))	
a	1635 (64-3/8)
b	1340 (52-3/4)
c	790 (31-1/8)
d	77 (3-1/32)
e	50 (1-15/16)
f	244 (9-5/8)
g	63 (2-1/2)
h	50 (1-15/16)

# AV5 7-80 (TR)

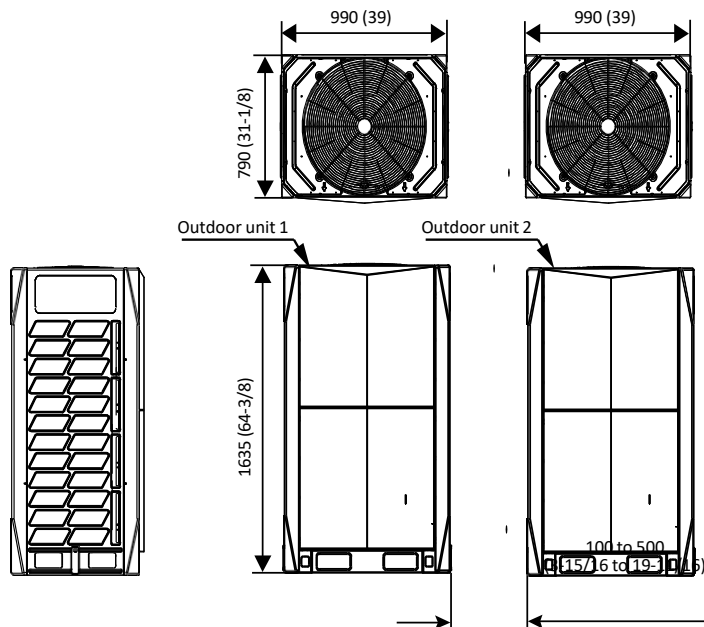
Heat Pump 220V, 3Ph, 60Hz / 460V, 3Ph, 60Hz

## Unidades exteriores expansión directa de refrigerante variable VRF

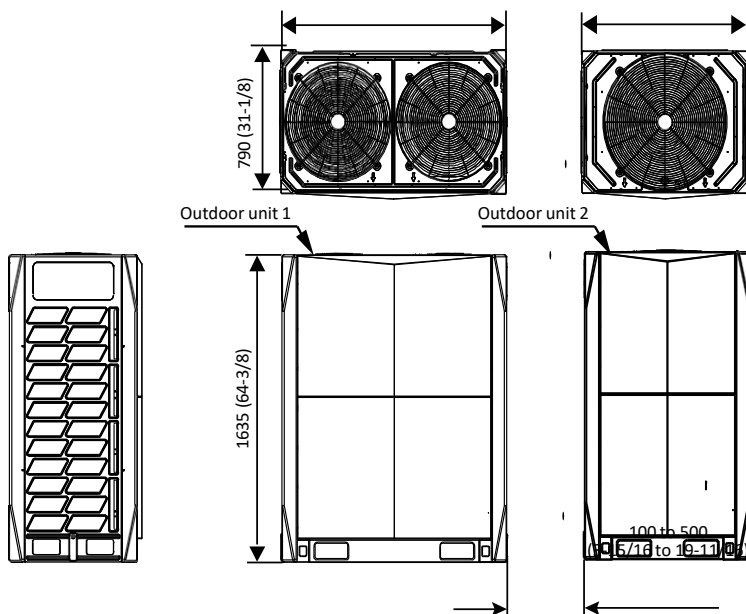
Potencia 25 ÷ 276,0 kW

### Combinations of Units

AV5-X670W/V2DN1



AV5-X730W/V2DN1 / AV5-X780W/V2DN1 / AV5-X840W/V2DN1 / AV5-X895W/V2DN1 / AV5-X950W/V2DN1



# AV5 7-80 (TR)

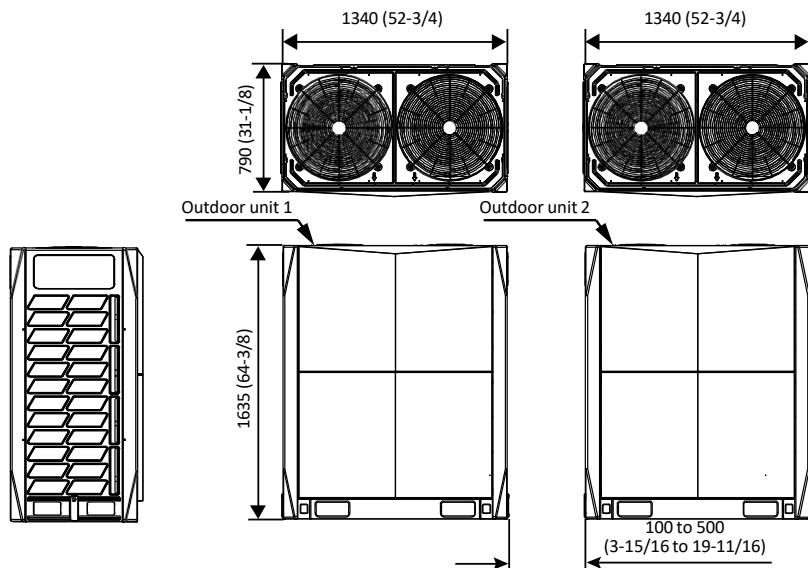
Heat Pump 220V, 3Ph, 60Hz / 460V, 3Ph, 60Hz

## Unidades exteriores expansión directa de refrigerante variable VRF

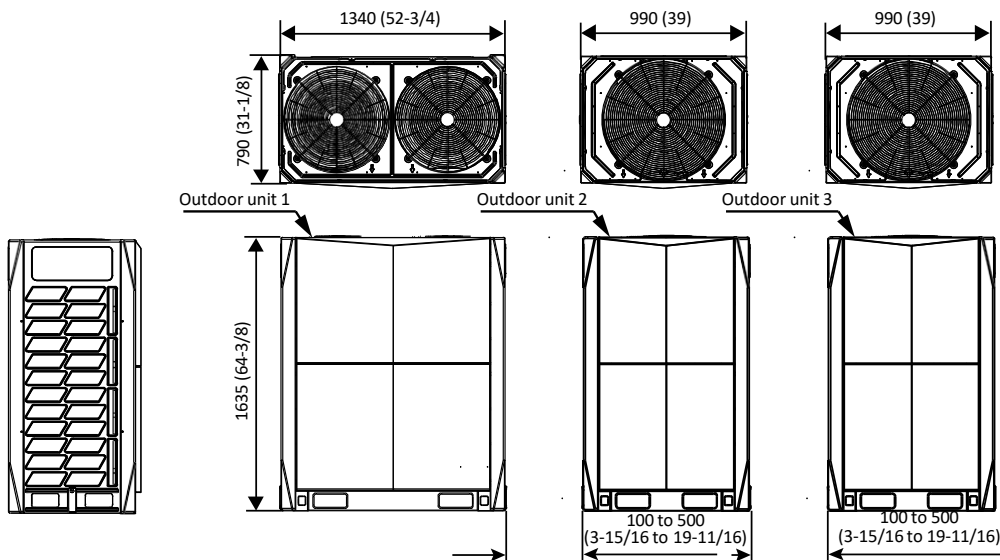
Potencia 25 ÷ 276,0 kW

### Combinations of Units

AV5-X1000W/V2DN1 / AV5-X1065W/V2DN1 / AV5-X1115W/V2DN1 / AV5-X1175W/V2DN1 / AV5-X1230W/V2DN1



### MV5-X1285W/V2DN1



# AV5 7-80 (TR)

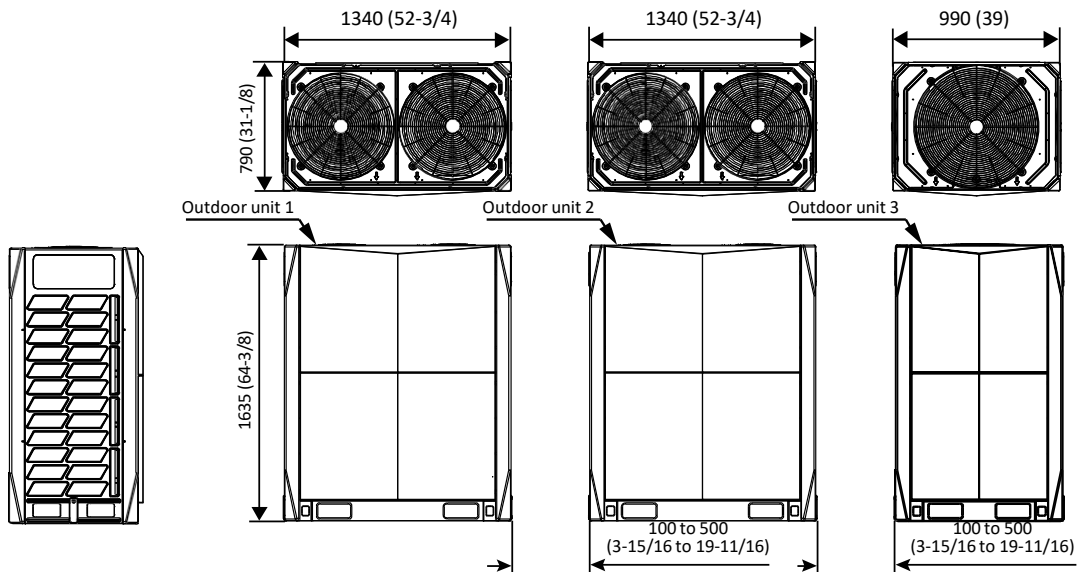
Heat Pump 220V, 3Ph, 60Hz / 460V, 3Ph, 60Hz

## Unidades exteriores expansión directa de refrigerante variable VRF

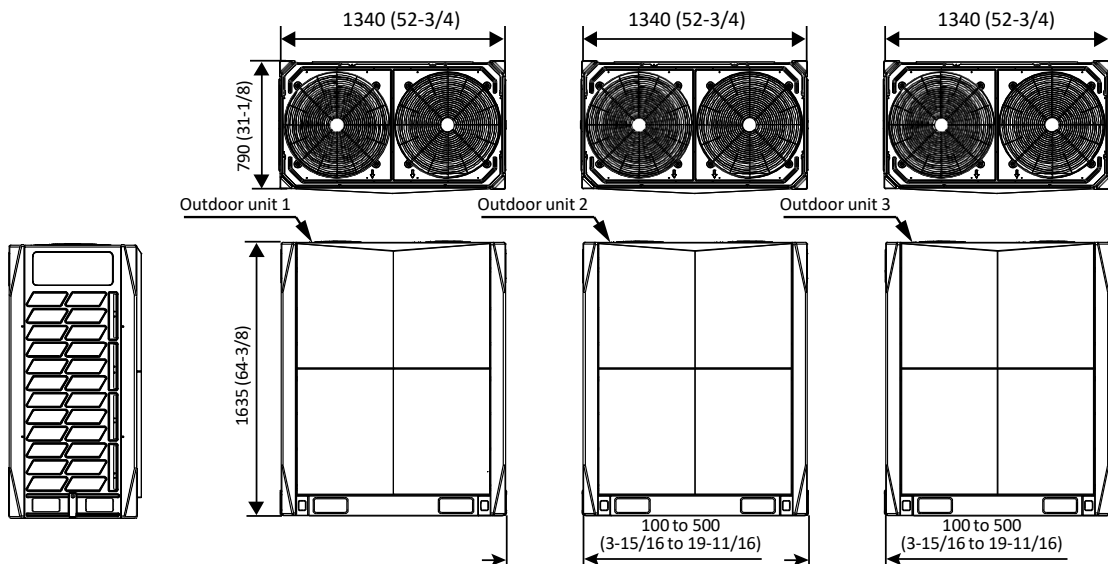
Potencia 25 ÷ 276,0 kW

### Combinations of Units

AV5-X1345W/V2DN1 / AV5-X1395W/V2DN1 / AV5-X1455W/V2DN1 / AV5-X1510W/V2DN1 / AV5-X1565W/V2DN1



AV5-X1615W/V2DN1 / AV5-X1680W/V2DN1 / AV5-X1730W/V2DN1 / AV5-X1790W/V2DN1 / AV5-X1845W/V2DN1



**Unidades exteriores expansión directa de refrigerante variable VRF**

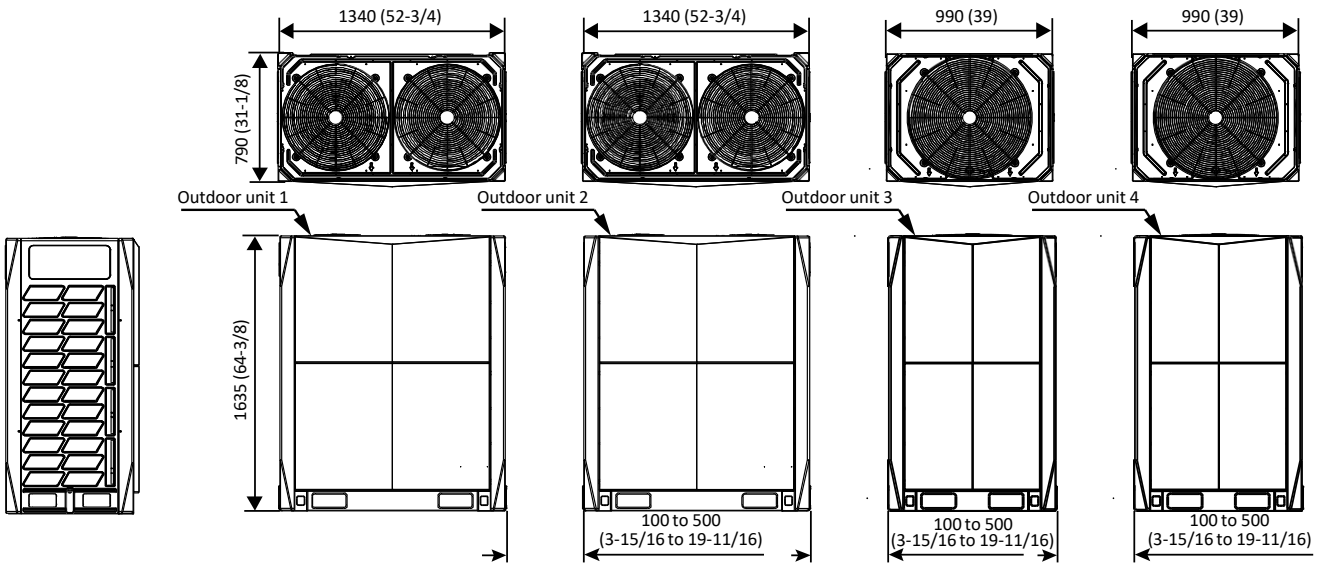
**AV5 7-80 (TR)**

Heat Pump 220V, 3Ph, 60Hz / 460V, 3Ph, 60Hz

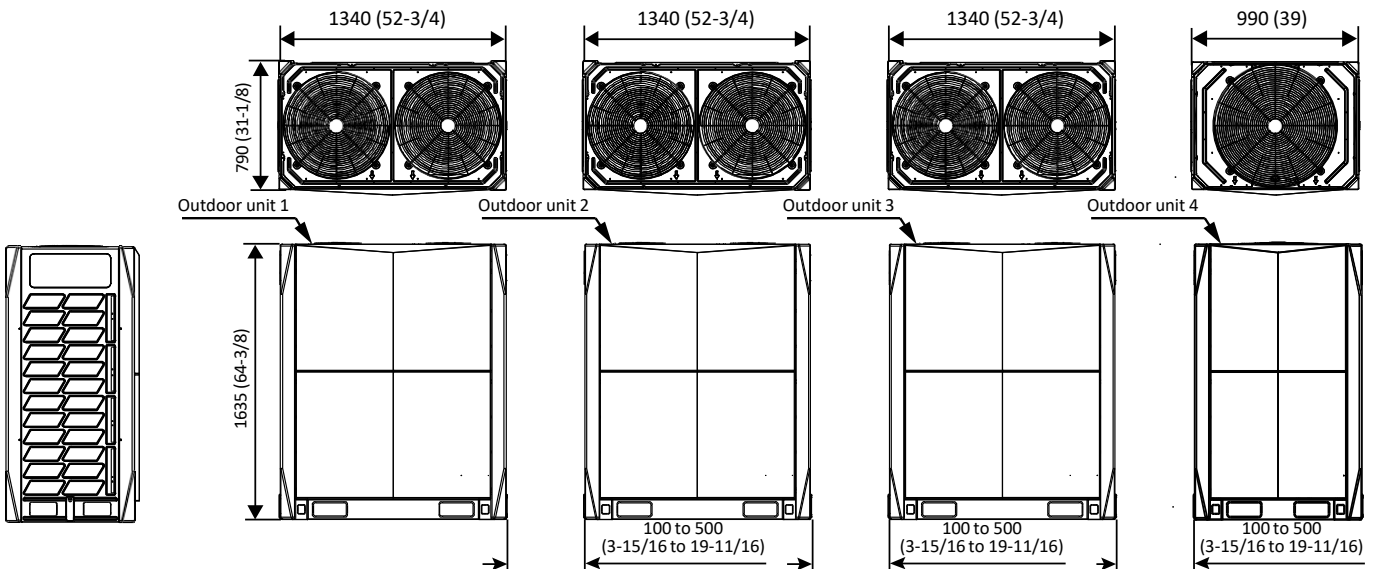
Potencia 25 ÷ 276,0 kW

**Combinations of Units**

AV5-X1900W/V2DN1



AV5-X1960W/V2DN1 / AV5-X2010W/V2DN1 / AV5-X2070W/V2DN1 / AV5-X2125W/V2DN1 / AV5-X2180W/V2DN1



# AV5 7-80 (TR)

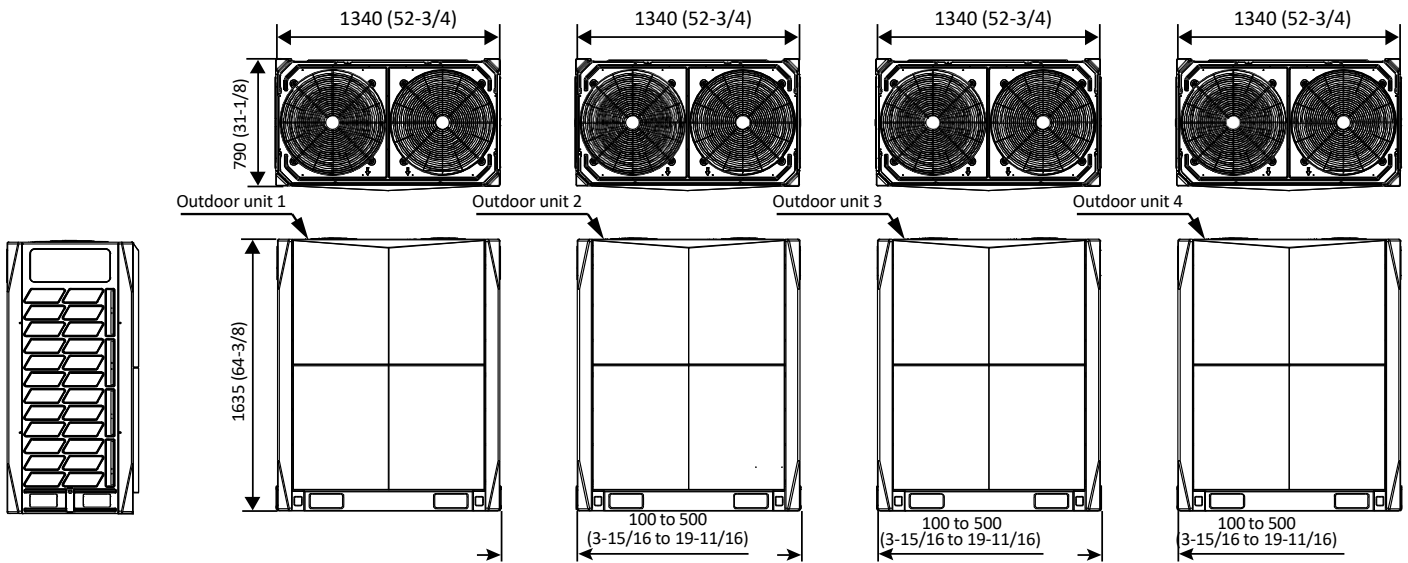
Heat Pump 220V, 3Ph, 60Hz / 460V, 3Ph, 60Hz

## Unidades exteriores expansión directa de refrigerante variable VRF

Potencia 25 ÷ 276,0 kW

### Combinations of Units

AV5-X2230W/V2DN1 / AV5-X2295W/V2DN1 / AV5-X2345W/V2DN1 / AV5-X2405W/V2DN1 / AV5-X2460W/V2DN1





## Unidades exteriores expansión directa de refrigerante variable VRF

# AV5 7-80 (TR)

Heat Pump 220V, 3Ph, 60Hz / 460V, 3Ph, 60Hz

Potencia 25 ÷ 276,0 kW

### Especificaciones unidades exteriores

HP	8		10		12		14		
Model (220V, 3Ph, 60Hz)	AV5-X252W/V2DN1		AV5-X280W/V2DN1		AV5-X335W/V2DN1		AV5-X400W/V2DN1		
Model (460V, 3Ph, 60Hz)	AV5-X252W/V2ZN1		AV5-X280W/V2ZN1		AV5-X335W/V2ZN1		AV5-X400W/V2ZN1		
Combination type	/		/		/		/		
Cooling	Capacity	kW(kBtu/h)	25.2(86)	28(95.5)	33.5(114.3)	40(136.5)			
	input	kW	5,36	6,22	7,79	9,3			
	EER	KW/KW	4,7	4,5	4,3	4,3			
Heating	Capacity	kW(kBtu/h)	27(92.1)	31.5(107.5)	37.5(128)	45(153.5)			
	input	kW	4,82	5,94	7,65	9,38			
	COP	KW/KW	5,6	5,3	4,9	4,8			
Connectable indoor unit	Total capacity	50~130% of outdoor unit capacity		50~130% of outdoor unit capacity		50~130% of outdoor unit capacity		50~130% of outdoor unit capacity	
	Max. quantity	13		16		20		23	
Compressor	Type	DC inverter		DC inverter		DC inverter		DC inverter	
	Quantity	1		1		1		2	
Fan motor	Type	DC motor		DC motor		DC motor		DC motor	
	Quantity	1		1		1		2	
	Static pressure	Pa(in.wg)	0-20(0-0.08) (default)		0-20(0-0.08) (default)		0-20(0-0.08) (default)		0-20(0-0.08) (default)
Pa(in.wg)		20-60(0.08-0.24) (customized)		20-60(0.08-0.24) (customized)		20-60(0.08-0.24) (customized)		20-60(0.08-0.24) (customized)	
Refrigerant	Type	R410A		R410A		R410A		R410A	
	Factory charging	kg	9	9	11	13			
	lbs	19,8	19,8	24,2	28,6				
Pipe connections	Liquid pipe	mm(inch)	Φ12.7(Φ1/2)	Φ12.7(Φ1/2)	Φ15.9(Φ5/8)	Φ15.9(Φ5/8)			
	Gas pipe	mm(inch)	Φ25.4(Φ1)	Φ25.4(Φ1)	Φ28.6(Φ1-1/8)	Φ31.8(Φ1-1/4)			
	pipe	mm(inch)	Φ6.35(Φ1/4)	Φ6.35(Φ1/4)	Φ6.35(Φ1/4)	Φ6.35(Φ1/4)			
Airflow rate	m <sup>3</sup> /h(CFM)	12000(7063)		12000(7063)		12000(7063)		14000(8240)	
Sound pressure level	dB(A)	58		59		60		62	
Net dimension (W×H×D)	mm	990×1635×790		990×1635×791		990×1635×792		1340×1635×790	
	inch	39×64-3/8×31-1/8		39×64-3/8×31-1/9		39×64-3/8×31-1/10		52-3/4×64-3/8×31-1/8	
Packing size (W×H×D)	mm	1090×1805×860		1090×1805×861		1090×1805×862		1405×1805×855	
	inch	42-15/16×71-1/16×33-7/8		42-15/16×71-1/16×33-7/9		42-15/16×71-1/16×33-7/10		55-5/16×71-1/16×33-21/32	
Net weight (220V)	kg	219		219		237		297	
	lbs	481,8		481,8		521,4		654,3	
Gross weight (220V)	kg	234		234		252		315	
	lbs	514,8		514,8		554,4		693,0	
Net weight (460V)	kg	229		229		247		326	
	lbs	503,8		503,8		543,4		717,2	
Gross weight (460V)	kg	249		249		267		353	
	lbs	548		548		587		777	
Operating temperature range	°F(°C)		Cooling: -5-48(23-118.4); Heating: -20-24(-4-75.2)						

HP	16		18		20		22		
Model (220V, 3Ph, 60Hz)	AV5-X450W/V2DN1		AV5-X500W/V2DN1		AV5-X560W/V2DN1		AV5-X615W/V2DN1		
Model (460V, 3Ph, 60Hz)	AV5-X450W/V2ZN1		AV5-X500W/V2ZN1		AV5-X560W/V2ZN1		AV5-X615W/V2ZN1		
Combination type	/		/		/		/		
Cooling	Capacity	kW(kBtu/h)	45(153.5)	50(170.6)	56(191.1)	61.5(209.8)			
	input	kW	10,98	12,82	14,51	16,44			
	EER	KW/KW	4,1	3,9	3,86	3,74			
Heating	Capacity	kW(kBtu/h)	50(170.6)	56(191.1)	63(215)	69(235.4)			
	input	kW	10,87	13,18	15,29	17,12			
	COP	KW/KW	4,6	4,25	4,12	4,03			
Connectable indoor unit	Total capacity	50~130% of outdoor unit capacity		50~130% of outdoor unit capacity		50~130% of outdoor unit capacity		50~130% of outdoor unit capacity	
	Max. quantity	26		29		33		36	
Compressor	Type	DC inverter		DC inverter		DC inverter		DC inverter	
	Quantity	2		2		2		2	
Fan motor	Type	DC motor		DC motor		DC motor		DC motor	
	Quantity	2		2		2		2	
	Static pressure	Pa(in.wg)	0-20(0-0.08) (default)		0-20(0-0.08) (default)		0-20(0-0.08) (default)		0-20(0-0.08) (default)
Pa(in.wg)		20-60(0.08-0.24) (customized)		20-60(0.08-0.24) (customized)		20-60(0.08-0.24) (customized)		20-60(0.08-0.24) (customized)	
Refrigerant	Type	R410A		R410A		R410A		R410A	
	Factory charging	kg	13	13	16	16			
	lbs	29,6	29,6	35,2	35,2				
Pipe connections	Liquid pipe	mm(inch)	Φ15.9(Φ5/8)	Φ19.1(Φ3/4)	Φ19.1(Φ3/4)	Φ19.1(Φ3/4)			
	Gas pipe	mm(inch)	Φ31.8(Φ1-1/4)	Φ31.8(Φ1-1/4)	Φ31.8(Φ1-1/4)	Φ31.8(Φ1-1/4)			
	pipe	mm(inch)	Φ6.35(Φ1/4)	Φ6.35(Φ1/4)	Φ6.35(Φ1/4)	Φ6.35(Φ1/4)			
Airflow rate	m <sup>3</sup> /h(CFM)	14000(8240)		16000(9417)		16000(9417)		16000(9417)	
Sound pressure level	dB(A)	62		63		64		65	
Net dimension (W×H×D)	mm	1340×1635×791		1340×1635×792		1340×1635×793		1340×1635×794	
	inch	52-3/4×64-3/8×31-1/9		52-3/4×64-3/8×31-1/10		52-3/4×64-3/8×31-1/11		52-3/4×64-3/8×31-1/12	
Packing size (W×H×D)	mm	1405×1805×856		1405×1805×857		1405×1805×858		1405×1805×859	
	inch	55-5/16×71-1/16×33-21/33		55-5/16×71-1/16×33-21/34		55-5/16×71-1/16×33-21/35		55-5/16×71-1/16×33-21/36	
Net weight (220V)	kg	297		305		340		340	
	lbs	654,3		671,0		748,0		748,0	
Gross weight (220V)	kg	315		323		358		358	
	lbs	693,0		710,6		787,6		787,6	
Net weight (460V)	kg	326		334		369		369	
	lbs	717,2		734,8		811,8		811,8	
Gross weight (460V)	kg	353		361		396		396	
	lbs	777		794		871		871	
Operating temperature range	°F(°C)		Cooling: -5-48(23-118.4); Heating: -20-24(-4-75.2)						

Notes:

- Indoor temperature 27°C DB, 19°C WB; outdoor temperature 35°C DB; equivalent refrigerant piping length 7.5m with zero level difference.
- Indoor temperature 20°C DB; outdoor temperature 7°C DB, 6°C WB; equivalent refrigerant piping length 7.5m with zero level difference.
- Diameters given are those of the unit's stop valve.
- Sound pressure level is measured at a position 1m in front of the unit and 1.3m above the floor in a semi-anechoic chamber.

# Unidades exteriores expansión directa de refrigerante variable VRF

## AV5 7-80 (TR)

Heat Pump 220V, 3Ph, 60Hz / 460V, 3Ph, 60Hz

Potencia 25 ÷ 276,0 kW

### Especificaciones unidades exteriores

HP		24	26	28	30	
Model (220V, 3Ph, 60Hz)		AV5-X670W/V2DN1	AV5-X730W/V2DN1	AV5-X780W/V2DN1	AV5-X840W/V2DN1	
Model (460V, 3Ph, 60Hz)		AV5-X670W/V2Z2N1	AV5-X730W/V2Z2N1	AV5-X780W/V2Z2N1	AV5-X840W/V2Z2N1	
Combination type		12HP×2	10HP+16HP	10HP+18HP	10HP+20HP	
Cooling	Capacity	kW(kBtu/h)	67(228.6)	73(249.1)	78(266.1)	84(286.6)
	input	kW	15,58	17,2	19,04	20,73
	EER	KW/KW	4,3	4,24	4,1	4,05
Heating	Capacity	kW(kBtu/h)	75(255.9)	81.5(278.1)	87.5(298.6)	94.5(322.4)
	input	kW	15,31	16,81	19,12	21,23
	COP	KW/KW	4,9	4,85	4,58	4,45
Connectable indoor unit	Total capacity	50~130% of outdoor unit capacity				
	Max. quantity	39				
Compressor	Type	DC inverter				
	Quantity	3				
Fan motor	Type	DC motor				
	Quantity	2				
	Static pressure	Pa(in.wg)	0-20(0-0.08) (default)			
Refrigerant	Type	R410A				
	Factory charging	kg	11×2			
	Liquid pipe	mm(inch)	Φ15.9(Φ5/8)			
Pipe connections	Gas pipe	mm(inch)	Φ28.6(Φ1-1/8)			
	Gas pipe	mm(inch)	Φ6.35(Φ1/4)			
	Airflow rate	m <sup>3</sup> /h(CFM)	24000(14126)			
Sound pressure level	dB(A)	64				
Net dimension (W×H×D)	mm	(990×1635×790)×2				
	inch	(39×64-3/8×31-1/8)×2				
Packing size (W×H×D)	mm	(1090×1805×860)×2				
	inch	(42-15/16×71-1/16×33-7/8)×2				
Net weight (220V)	kg	237×2				
	lbs	521.4×2				
Gross weight (220V)	kg	252×2				
	lbs	554.4×2				
Net weight (460V)	kg	247×2				
	lbs	543.4×2				
Gross weight (460V)	kg	267×2				
	lbs	587.4×2				
Operating temperature range	°F(°C)	Cooling: -5-48(23-118.4); Heating: -20-24(-4-75.2)				

HP		32	34	36	38	
Model (220V, 3Ph, 60Hz)		AV5-X895W/V2DN1	AV5-X950W/V2DN1	AV5-X1000W/V2DN1	AV5-X1065W/V2DN1	
Model (460V, 3Ph, 60Hz)		AV5-X895W/V2Z2N1	AV5-X950W/V2Z2N1	AV5-X1000W/V2Z2N1	AV5-X1065W/V2Z2N1	
Combination type		10HP+22HP	12HP+22HP	18HP×2	16HP+22HP	
Cooling	Capacity	kW(kBtu/h)	89.5(305.4)	95(324.1)	100(341.2)	106.5(363.4)
	input	kW	22,67	24,23	25,64	27,42
	EER	KW/KW	3,95	3,92	3,9	3,88
Heating	Capacity	kW(kBtu/h)	100.5(342.9)	106.5(363.4)	112(382.1)	119(406)
	input	kW	23,06	24,77	26,35	27,99
	COP	KW/KW	4,36	4,3	4,25	4,25
Connectable indoor unit	Total capacity	50~130% of outdoor unit capacity				
	Max. quantity	53				
Compressor	Type	DC inverter				
	Quantity	3				
Fan motor	Type	DC motor				
	Quantity	3				
	Static pressure	Pa(in.wg)	0-20(0-0.08) (default)			
Refrigerant	Type	R410A				
	Factory charging	kg	9+17			
	Liquid pipe	mm(inch)	Φ19.1(Φ3/4)			
Pipe connections	Gas pipe	mm(inch)	Φ31.8(Φ1-1/4)			
	Gas pipe	mm(inch)	Φ6.35(Φ1/4)			
	Airflow rate	m <sup>3</sup> /h(CFM)	28000(16480)			
Sound pressure level	dB(A)	65				
Net dimension (W×H×D)	mm	(990×1635×790)+(1340×1635×790)				
	inch	(39×64-3/8×31-1/8)+(52-3/4×64-)				
Packing size (W×H×D)	mm	(1090×1805×860)+(1405×1805×855)				
	inch	(42-15/16×71-1/16×33-7/8)+(55-				
Net weight (220V)	kg	237+340				
	lbs	521.4+748				
Gross weight (220V)	kg	252+358				
	lbs	554.4+787.6				
Net weight (460V)	kg	247+369				
	lbs	543.4+811.8				
Gross weight (460V)	kg	267+396				
	lbs	587.4+871.2				
Operating temperature range	°F(°C)	Cooling: -5-48(23-118.4); Heating: -20-24(-4-75.2)				

Notes:

1. Indoor temperature 27°C DB, 19°C WB; outdoor temperature 35°C DB; equivalent refrigerant piping length 7.5m with zero level difference.
2. Indoor temperature 20°C DB; outdoor temperature 7°C DB, 6°C WB; equivalent refrigerant piping length 7.5m with zero level difference.
3. Diameters given are those of the unit's stop valve.
4. Sound pressure level is measured at a position 1m in front of the unit and 1.3m above the floor in a semi-anechoic chamber.

# Unidades exteriores expansión directa de refrigerante variable VRF

## AV5 7-80 (TR)

Heat Pump 220V, 3Ph, 60Hz / 460V, 3Ph, 60Hz

Potencia 25 ÷ 276,0 kW

### Especificaciones unidades exteriores

HP	40		42		44		46	
Model (220V, 3Ph, 60Hz)	AV5-X1115W/V2DN1		AV5-X1175W/V2DN1		AV5-X1230W/V2DN1		AV5-X1285W/V2DN1	
Model (460V, 3Ph, 60Hz)	AV5-X1115W/V2ZDN1		AV5-X1175W/V2ZDN1		AV5-X1230W/V2ZDN1		AV5-X1285W/V2ZDN1	
Combination type	18HP+22HP		20HP+22HP		22HP×2		12HP×2+22HP	
Cooling	Capacity	kW(kBtu/h)	111.5(380.4)	117.5(400.9)	123(419.7)	128.5(438.4)		
	input	kW	29.26	30.95	32.89	32.03		
	EER	KW/KW	3.81	3.8	3.74	4.01		
Heating	Capacity	kW(kBtu/h)	125(426.5)	132(450.4)	138(470.9)	144(491.3)		
	input	kW	30.3	32.41	34.24	32.43		
	COP	KW/KW	4.13	4.07	4.03	4.44		
Connectable indoor unit	Total capacity		50~130% of outdoor unit capacity	50~130% of outdoor unit capacity	50~130% of outdoor unit capacity	50~130% of outdoor unit capacity		
	Max. quantity		64					
Compressor	Type		DC inverter	DC inverter	DC inverter	DC inverter		
	Quantity		4	4	4	4		
Fan motor	Type		DC motor	DC motor	DC motor	DC motor		
	Quantity		4	4	4	4		
Static pressure	Pa(in.wg)		0-20(0-0.08) (default)	0-20(0-0.08) (default)	0-20(0-0.08) (default)	0-20(0-0.08) (default)		
	Pa(in.wg)		20-60(0.08-0.24) (customized)	20-60(0.08-0.24) (customized)	20-60(0.08-0.24) (customized)	20-60(0.08-0.24) (customized)		
Refrigerant	Type		R410A	R410A	R410A	R410A		
	Factory charging	kg	13+17	16×2	16×3	11×2+16		
Pipe connections	Liquid pipe	mm(inch)	Φ19.1(Φ3/4)	Φ19.1(Φ3/4)	Φ19.1(Φ3/4)	Φ19.1(Φ3/4)		
	Gas pipe	mm(inch)	Φ38.1(Φ1-1/2)	Φ38.1(Φ1-1/2)	Φ38.1(Φ1-1/2)	Φ38.1(Φ1-1/2)		
	pipe	mm(inch)	Φ6.35(Φ1/4)	Φ6.35(Φ1/4)	Φ6.35(Φ1/4)	Φ6.35(Φ1/4)		
Airflow rate	m <sup>3</sup> /h(CFM)		32000(18834)	32000(18834)	32000(18834)	40000(23543)		
Sound pressure level	dB(A)		66	66	66	66		
Net dimension (W×H×D)	mm		(1340×1635×790)×2	(1340×1635×790)×2	(1340×1635×790)×2	(990×1635×790)×2+(1340×		
	inch		(52-3/4×64-3/8×31-1/8)×2	(52-3/4×64-3/8×31-1/8)×2	(52-3/4×64-3/8×31-1/8)×2	(39×64-3/8×31-1/8)×2+		
Packing size (W×H×D)	mm		(1405×1805×855)×2	(1405×1805×855)×2	(1405×1805×855)×2	(1090×1805×860)×2+(1405×		
	inch		(55-5/16×71-1/16×33-21/32)×2	(55-5/16×71-1/16×33-21/32)×2	(55-5/16×71-1/16×33-21/32)×2	(42-15/16×71-1/16×33-7/8)×2+(55-		
Net weight (220V)	kg		305+340	340×2	340×3	237×2+340		
	lbs		671+748	748×2	748×3	521.4×2+748		
Gross weight (220V)	kg		323+358	358×2	358×3	252×2+358		
	lbs		710.6+787.6	787.6×2	787.6×3	554.4×2+787.6		
Net weight (460V)	kg		334+369	369×2	369×3	247×2+369		
	lbs		734.8+811.8	811.8×2	811.8×3	543.4×2+811.8		
Gross weight (460V)	kg		361+396	396×2	396×3	267×2+396		
	lbs		794.2+871.2	871.2×2	871.2×3	587.4×2+871.2		
Operating temperature range	°F(°C)		Cooling: -5-48(23-118.4); Heating: -20-24(-4-75.2)					

HP	48		50		52		54	
Model (220V, 3Ph, 60Hz)	AV5-X1345W/V2DN1		AV5-X1395W/V2DN1		AV5-X1455W/V2DN1		AV5-X1510W/V2DN1	
Model (460V, 3Ph, 60Hz)	AV5-X1345W/V2ZDN1		AV5-X1395W/V2ZDN1		AV5-X1455W/V2ZDN1		AV5-X1510W/V2ZDN1	
Combination type	10HP+16HP+22HP		10HP+18HP+22HP		10HP+20HP+22HP		10HP+22HP×2	
Cooling	Capacity	kW(kBtu/h)	134.5(458.9)	139.5(476)	145.5(496.4)	151(515.2)		
	input	kW	33.64	35.49	37.17	39.11		
	EER	KW/KW	4	3.93	3.91	3.86		
Heating	Capacity	kW(kBtu/h)	150.5(513.5)	156.5(534)	163.5(557.9)	169.5(578.3)		
	input	kW	33.93	36.24	38.36	40.19		
	COP	KW/KW	4.44	4.32	4.26	4.22		
Connectable indoor unit	Total capacity		50~130% of outdoor unit capacity	50~130% of outdoor unit capacity	50~130% of outdoor unit capacity	50~130% of outdoor unit capacity		
	Max. quantity		64					
Compressor	Type		DC inverter	DC inverter	DC inverter	DC inverter		
	Quantity		5	5	5	5		
Fan motor	Type		DC motor	DC motor	DC motor	DC motor		
	Quantity		5	5	5	5		
Static pressure	Pa(in.wg)		0-20(0-0.08) (default)	0-20(0-0.08) (default)	0-20(0-0.08) (default)	0-20(0-0.08) (default)		
	Pa(in.wg)		20-60(0.08-0.24) (customized)	20-60(0.08-0.24) (customized)	20-60(0.08-0.24) (customized)	20-60(0.08-0.24) (customized)		
Refrigerant	Type		R410A	R410A	R410A	R410A		
	Factory charging	kg	9+13+16	9+13+17	9+16×2	9+16×3		
Pipe connections	Liquid pipe	mm(inch)	Φ19.1(Φ3/4)	Φ19.1(Φ3/4)	Φ22.2(Φ7/8)	Φ22.2(Φ7/8)		
	Gas pipe	mm(inch)	Φ38.1(Φ1-1/2)	Φ38.1(Φ1-1/2)	Φ41.3(Φ1-5/8)	Φ41.3(Φ1-5/8)		
	pipe	mm(inch)	Φ6.35(Φ1/4)	Φ6.35(Φ1/4)	Φ6.35(Φ1/4)	Φ6.35(Φ1/4)		
Airflow rate	m <sup>3</sup> /h(CFM)		42000(24720)	44000(25897)	44000(25897)	44000(25897)		
Sound pressure level	dB(A)		67	67	67	67		
Net dimension (W×H×D)	mm		(990×1635×790)+(1340×1635×790)×2	(990×1635×790)+(1340×1635×790)×3	(990×1635×790)+(1340×1635×790)×4	(990×1635×790)+(1340×1635×790)×5		
	inch		(39×64-3/8×31-1/8)+(52-3/4×64-	(39×64-3/8×31-1/8)+(52-3/4×64-	(39×64-3/8×31-1/8)+(52-3/4×64-	(39×64-3/8×31-1/8)+(52-3/4×64-		
Packing size (W×H×D)	mm		(1090×1805×860)+(1405×1805×855)×	(1090×1805×860)+(1405×1805×855)×	(1090×1805×860)+(1405×1805×855)×	(1090×1805×860)+(1405×1805×855)×		
	inch		(42-15/16×71-1/16×33-7/8)+(55-	(42-15/16×71-1/16×33-7/8)+(55-	(42-15/16×71-1/16×33-7/8)+(55-	(42-15/16×71-1/16×33-7/8)+(55-		
Net weight (220V)	kg		219+297+340	219+305+340	219+340×2	219+340×3		
	lbs		481.8+654.3+748	481.8+671+748	481.8+748×2	481.8+748×3		
Gross weight (220V)	kg		234+315+358	234+323+358	234+358×2	234+358×3		
	lbs		514.8+693+787.6	514.8+710.6+787.6	514.8+787.6×2	514.8+787.6×3		
Net weight (460V)	kg		229+326+369	229+334+369	229+369×2	229+369×3		
	lbs		503.8+717.2+811.8	503.8+734.8+811.8	503.8+811.8×2	503.8+811.8×3		
Gross weight (460V)	kg		249+353+396	249+361+396	249+396×2	249+396×3		
	lbs		547.8+776.6+871.2	547.8+794.2+871.2	547.8+871.2×2	547.8+871.2×3		
Operating temperature range	°F(°C)		Cooling: -5-48(23-118.4); Heating: -20-24(-4-75.2)					

Notes:

- Indoor temperature 27°C DB, 19°C WB; outdoor temperature 35°C DB; equivalent refrigerant piping length 7.5m with zero level difference.
- Indoor temperature 20°C DB; outdoor temperature 7°C DB, 6°C WB; equivalent refrigerant piping length 7.5m with zero level difference.
- Diameters given are those of the unit's stop valve.
- Sound pressure level is measured at a position 1m in front of the unit and 1.3m above the floor in a semi-anechoic chamber.

# Unidades exteriores expansión directa de refrigerante variable VRF

## AV5 7-80 (TR)

Heat Pump 220V, 3Ph, 60Hz / 460V, 3Ph, 60Hz

Potencia 25 ÷ 276,0 kW

### Especificaciones unidades exteriores

HP	56		58		60		62		
Model (220V, 3Ph, 60Hz)	AV5-X1565W/V2DN1		AV5-X1615W/V2DN1		AV5-X1680W/V2DN1		AV5-X1730W/V2DN1		
Model (460V, 3Ph, 60Hz)	AV5-X1565W/V2ZN1		AV5-X1615W/V2ZN1		AV5-X1680W/V2ZN1		AV5-X1730W/V2ZN1		
Combination type	12HP+22HP×2		18HP×2+22HP		16HP+22HP×2		18HP+22HP×2		
Cooling	Capacity	kW(kBtu/h)	156.5(534)	161.5(551)	168(573.2)	173(590.3)	173(590.3)	173(590.3)	
	input	kW	40.68	42.08	43.86	45.71	45.71	45.71	
	EER	KW/KW	3.85	3.84	3.83	3.78	3.78	3.78	
Heating	Capacity	kW(kBtu/h)	175.5(598.8)	181(617.6)	188(641.5)	194(661.9)	194(661.9)	194(661.9)	
	input	kW	41.9	43.47	45.11	47.42	47.42	47.42	
	COP	KW/KW	4.19	4.16	4.17	4.09	4.09	4.09	
Connectable indoor unit	Total capacity	50~130% of outdoor unit capacity		50~130% of outdoor unit capacity		50~130% of outdoor unit capacity		50~130% of outdoor unit capacity	
	Max. quantity	64		64		64		64	
Compressor	Type	DC inverter		DC inverter		DC inverter		DC inverter	
	Quantity	5		6		6		6	
Fan motor	Type	DC motor		DC motor		DC motor		DC motor	
	Quantity	5		6		6		6	
	Static pressure	Pa(in.wg)	0-20(0-0.08) (default)		0-20(0-0.08) (default)		0-20(0-0.08) (default)		0-20(0-0.08) (default)
Refrigerant	Type	R410A		R410A		R410A		R410A	
	Factory charging	kg	11+16×2	13×2+16	13+16×2	13+16×3	13+16×3	13+16×3	
Pipe connections	Liquid pipe	mm(inch)	Φ22.2(Φ7/8)	Φ22.2(Φ7/8)	Φ22.2(Φ7/8)	Φ22.2(Φ7/8)	Φ22.2(Φ7/8)	Φ22.2(Φ7/8)	
	Gas pipe	mm(inch)	Φ41.3(Φ1-5/8)	Φ41.3(Φ1-5/8)	Φ41.3(Φ1-5/8)	Φ41.3(Φ1-5/8)	Φ41.3(Φ1-5/8)	Φ41.3(Φ1-5/8)	
	pipe	mm(inch)	Φ6.35(Φ1/4)	Φ6.35(Φ1/4)	Φ6.35(Φ1/4)	Φ6.35(Φ1/4)	Φ6.35(Φ1/4)	Φ6.35(Φ1/4)	
Airflow rate	m <sup>3</sup> /h(CFM)	44000(25897)		48000(28252)		46000(27075)		48000(28252)	
Sound pressure level	dB(A)	67		68		68		68	
Net dimension (W×H×D)	mm	(990×1635×790)+(1340×1635×790)×6		(1340×1635×790)×3		(1340×1635×790)×4		(1340×1635×790)×5	
	inch	(39×64-3/8×31-1/8)+(52-3/4×64-3/8)		(52-3/4×64-3/8×31-1/8)×3		(52-3/4×64-3/8×31-1/8)×4		(52-3/4×64-3/8×31-1/8)×5	
Packing size (W×H×D)	mm	(1090×1805×860)+(1405×1805×855)×6		(1405×1805×855)×3		(1405×1805×855)×4		(1405×1805×855)×5	
	inch	(42-15/16×71-1/16×33-7/8)+(55-5/16×71-1/16×33-21/32)×6		(55-5/16×71-1/16×33-21/32)×3		(55-5/16×71-1/16×33-21/32)×4		(55-5/16×71-1/16×33-21/32)×5	
Net weight (220V)	kg	237+340×2		305×2+340		297+340×2		305+340×2	
	lbs	521.4+748×2		671×2+748		654.3+748×2		671+748×2	
Gross weight (220V)	kg	252+358×2		323×2+358		315+358×2		323+358×2	
	lbs	554.4+787.6×2		710.6×2+787.6		693+787.6×2		710.6+787.6×2	
Net weight (460V)	kg	247+369×2		334×2+369		326+369×2		334+369×2	
	lbs	543.4+811.8×2		734.8×2+811.8		717.2+811.8×2		734.8+811.8×2	
Gross weight (460V)	kg	267+396×2		361×2+396		361+396×2		361+396×2	
	lbs	587.4+871.2×2		794.2×2+871.2		794.2+871.2×2		794.2+871.2×2	
Operating temperature range	°F(°C)	Cooling: -5-48(23-118.4); Heating: -20-24(-4-75.2)							

HP	64		66		68		70		
Model (220V, 3Ph, 60Hz)	AV5-X1790W/V2DN1		AV5-X1845W/V2DN1		AV5-X1900W/V2DN1		AV5-X1960W/V2DN1		
Model (460V, 3Ph, 60Hz)	AV5-X1790W/V2ZN1		AV5-X1845W/V2ZN1		AV5-X1900W/V2ZN1		AV5-X1960W/V2ZN1		
Combination type	20HP+22HP×2		22HP×3		12HP×2+22HP×2		10HP+16HP+22HP×2		
Cooling	Capacity	kW(kBtu/h)	179(610.7)	184.5(629.5)	190(648.3)	196(668.8)	196(668.8)	196(668.8)	
	input	kW	47.4	49.33	48.47	50.09	50.09	50.09	
	EER	KW/KW	3.78	3.74	3.92	3.91	3.91	3.91	
Heating	Capacity	kW(kBtu/h)	685.8(201)	706.3(207)	726.8(213)	748.9(219.5)	748.9(219.5)	748.9(219.5)	
	input	kW	49.53	51.36	46.13	51.06	51.06	51.06	
	COP	KW/KW	4.06	4.03	4.62	4.3	4.3	4.3	
Connectable indoor unit	Total capacity	50~130% of outdoor unit capacity		50~130% of outdoor unit capacity		50~130% of outdoor unit capacity		50~130% of outdoor unit capacity	
	Max. quantity	64		64		64		64	
Compressor	Type	DC inverter		DC inverter		DC inverter		DC inverter	
	Quantity	6		6		6		6	
Fan motor	Type	DC motor		DC motor		DC motor		DC motor	
	Quantity	6		6		6		6	
	Static pressure	Pa(in.wg)	0-20(0-0.08) (default)		0-20(0-0.08) (default)		0-20(0-0.08) (default)		0-20(0-0.08) (default)
Refrigerant	Type	R410A		R410A		R410A		R410A	
	Factory charging	kg	16×3	16×4	11×2+16×2	9+13+16×2	9+13+16×2	9+13+16×2	
Pipe connections	Liquid pipe	mm(inch)	Φ22.2(Φ7/8)	Φ22.2(Φ7/8)	25.4(Φ1)	Φ25.4(Φ1)	Φ25.4(Φ1)	Φ25.4(Φ1)	
	Gas pipe	mm(inch)	Φ41.3(Φ1-5/8)	Φ41.3(Φ1-5/8)	Φ41.3(Φ1-5/8)	Φ44.5(Φ1-3/4)	Φ44.5(Φ1-3/4)	Φ44.5(Φ1-3/4)	
	pipe	mm(inch)	Φ6.35(Φ1/4)	Φ6.35(Φ1/4)	Φ6.35(Φ1/4)	Φ6.35(Φ1/4)	Φ6.35(Φ1/4)	Φ6.35(Φ1/4)	
Airflow rate	m <sup>3</sup> /h(CFM)	48000(28252)		48000(28252)		56000(32960)		58000(34138)	
Sound pressure level	dB(A)	68		68		68		69	
Net dimension (W×H×D)	mm	(1340×1635×790)×6		(1340×1635×790)×7		(990×1635×790)×2+		(990×1635×790)+(1340×1635×790)×3	
	inch	(52-3/4×64-3/8×31-1/8)×6		(52-3/4×64-3/8×31-1/8)×7		(39×64-3/8×31-1/8)×2+(52-3/4×64-3/8)		(39×64-3/8×31-1/8)+(52-3/4×64-3/8)	
Packing size (W×H×D)	mm	(1405×1805×855)×6		(1405×1805×855)×7		(1090×1805×860)×2+		(1090×1805×860)+(1405×1805×855)×6	
	inch	(55-5/16×71-1/16×33-21/32)×6		(55-5/16×71-1/16×33-21/32)×7		(42-15/16×71-1/16×33-7/8)×2+(55-5/16×71-1/16×33-21/32)×6		(42-15/16×71-1/16×33-7/8)+(55-5/16×71-1/16×33-21/32)×6	
Net weight (220V)	kg	340×3		340×4		237×2+340×2		219+297+340×2	
	lbs	748×3		748×4		521.4×2+748×2		481.8+654.3+748×2	
Gross weight (220V)	kg	358×3		358×4		252×2+358×2		234+315+358×2	
	lbs	787.6×3		787.6×4		554.4×2+787.6×2		514.8+693+787.6×2	
Net weight (460V)	kg	369×3		369×4		247×2+369×2		229+326+369×2	
	lbs	811.8×3		811.8×4		543.4×2+811.8×2		503.8+717.2+811.8×2	
Gross weight (460V)	kg	396×3		396×4		267×2+396×2		249+353+396×2	
	lbs	871.2×3		871.2×4		587.4×2+871.2×2		547.8+776.6+871.2×2	
Operating temperature range	°F(°C)	Cooling: -5-48(23-118.4); Heating: -20-24(-4-75.2)							

Notes:

- Indoor temperature 27°C DB, 19°C WB; outdoor temperature 35°C DB; equivalent refrigerant piping length 7.5m with zero level difference.
- Indoor temperature 20°C DB; outdoor temperature 7°C DB, 6°C WB; equivalent refrigerant piping length 7.5m with zero level difference.
- Diameters given are those of the unit's stop valve.
- Sound pressure level is measured at a position 1m in front of the unit and 1.3m above the floor in a semi-anechoic chamber.

## Unidades exteriores expansión directa de refrigerante variable VRF

# AV5 7-80 (TR)

Heat Pump 220V, 3Ph, 60Hz / 460V, 3Ph, 60Hz

Potencia 25 ÷ 276,0 kW

### Especificaciones unidades exteriores

HP	72		74		76		78			
Model (220V, 3Ph, 60Hz)	AV5-X2010W/V2DN1		AV5-X2070W/V2DN1		AV5-X2125W/V2DN1		AV5-X2180W/V2DN1			
Model (460V, 3Ph, 60Hz)	AV5-X2010W/V2ZN1		AV5-X2070W/V2ZN1		AV5-X2125W/V2ZN1		AV5-X2180W/V2ZN1			
Combination type	10HP+18HP+22HP×2		10HP+20HP+22HP×2		10HP+22HP×3		12HP+22HP×3			
Cooling	Capacity	kW(kBtu/h)	201(685.8)	207(706.3)	212.5(725.1)	218(743.8)				
	input	kW	51.93	53.62	55.55	57.12				
	EER	KW/KW	3.87	3.86	3.83	3.82				
Heating	Capacity	kW(kBtu/h)	225.5(769.4)	232.5(793.3)	238.5(813.8)	244.5(834.2)				
	input	kW	53.36	55.48	57.31	59.02				
	COP	KW/KW	4.23	4.19	4.16	4.14				
Connectable indoor unit	Total capacity	50~130% of outdoor unit capacity		50~130% of outdoor unit capacity		50~130% of outdoor unit capacity		50~130% of outdoor unit capacity		
	Max. quantity									
Compressor	Type	DC inverter		DC inverter		DC inverter		DC inverter		
	Quantity	7		7		7		7		
Fan motor	Type	DC motor		DC motor		DC motor		DC motor		
	Quantity	7		7		7		7		
Refrigerant	Static pressure	Pa(in.wg)	0-20(0-0.08) (default)		0-20(0-0.08) (default)		0-20(0-0.08) (default)		0-20(0-0.08) (default)	
	Pa(in.wg)	20-60(0.08-0.24) (customized)		20-60(0.08-0.24) (customized)		20-60(0.08-0.24) (customized)		20-60(0.08-0.24) (customized)		
Pipe connections	Liquid pipe	mm(inch)	Φ25.4(Φ1)		Φ25.4(Φ1)		Φ25.4(Φ1)		Φ25.4(Φ1)	
	Gas pipe	mm(inch)	Φ44.5(Φ1-3/4)		Φ44.5(Φ1-3/4)		Φ44.5(Φ1-3/4)		Φ44.5(Φ1-3/4)	
Airflow rate	mm <sup>3</sup> /h(CFM)	60000(35315)		60000(35315)		60000(35315)		60000(35315)		
	Sound pressure level	dB(A)	69		69		69		69	
Net dimension (W×H×D)	mm	(990×1635×790)+(1340×1635×790)×4		(990×1635×790)+(1340×1635×790)×5		(990×1635×790)+(1340×1635×790)×6		(990×1635×790)+(1340×1635×790)×7		
	inch	(39×64-3/8×31-1/8)+(52-3/4×64-		(39×64-3/8×31-1/8)+(52-3/4×64-		(39×64-3/8×31-1/8)+(52-3/4×64-		(39×64-3/8×31-1/8)+(52-3/4×64-		
Packing size (W×H×D)	mm	(1090×1805×860)+(1405×1805×855)×4		(1090×1805×860)+(1405×1805×855)×5		(1090×1805×860)+(1405×1805×855)×6		(1090×1805×860)+(1405×1805×855)×7		
	inch	(42-15/16×71-1/16×33-7/8)+(55-		(42-15/16×71-1/16×33-7/8)+(55-		(42-15/16×71-1/16×33-7/8)+(55-		(42-15/16×71-1/16×33-7/8)+(55-		
Net weight (220V)	kg	219+305+340×2		219+340×3		219+340×4		237+340×3		
	lbs	481.8+671+748×2		481.8+748×3		481.8+748×4		521.4+748×3		
Gross weight (220V)	kg	234+323+358×2		234+358×3		234+358×4		252+358×3		
	lbs	514.8+710.6+787.6×2		514.8+787.6×3		514.8+787.6×4		554.4+787.6×3		
Net weight (460V)	kg	229+334+369×2		229+369×3		229+369×4		247+369×3		
	lbs	503.8+734.8+811.8×2		503.8+811.8×3		503.8+811.8×4		543.4+811.8×3		
Gross weight (460V)	kg	249+361+396×2		249+396×3		249+396×4		267+396×3		
	lbs	547.8+794.2+871.2×2		547.8+871.2×3		547.8+871.2×4		587.4+871.2×3		
Operating temperature range	°F(°C)		Cooling: -5~48(23~118.4); Heating: -20~24(-4~75.2)							

HP	80		82		84			
Model (220V, 3Ph, 60Hz)	AV5-X2230W/V2DN1		AV5-X2295W/V2DN1		AV5-X2345W/V2DN1			
Model (460V, 3Ph, 60Hz)	AV5-X2230W/V2ZN1		AV5-X2295W/V2ZN1		AV5-X2345W/V2ZN1			
Combination type	18HP×2+22HP×2		16HP+22HP×3		18HP+22HP×3			
Cooling	Capacity	kW(kBtu/h)	223(760.9)	229.5(783.1)	234.5(800.1)			
	input	kW	58.53	60.31	62.15			
	EER	KW/KW	3.81	3.81	3.77			
Heating	Capacity	kW(kBtu/h)	250(853)	257(876.9)	263(897.4)			
	input	kW	60.6	62.23	64.54			
	COP	KW/KW	4.13	4.13	4.07			
Connectable indoor unit	Total capacity	50~130% of outdoor unit capacity		50~130% of outdoor unit capacity		50~130% of outdoor unit capacity		
	Max. quantity	64		8		8		
Compressor	Type	DC inverter		DC inverter		DC inverter		
	Quantity	8		8		8		
Fan motor	Type	DC motor		DC motor		DC motor		
	Quantity	8		8		8		
Refrigerant	Static pressure	Pa(in.wg)	0-20(0-0.08) (default)		0-20(0-0.08) (default)		0-20(0-0.08) (default)	
	Pa(in.wg)	20-60(0.08-0.24) (customized)		20-60(0.08-0.24) (customized)		20-60(0.08-0.24) (customized)		
Pipe connections	Liquid pipe	mm(inch)	Φ25.4(Φ1)		Φ25.4(Φ1)		Φ25.4(Φ1)	
	Gas pipe	mm(inch)	Φ44.5(Φ1-3/4)		Φ44.5(Φ1-3/4)		Φ44.5(Φ1-3/4)	
Airflow rate	mm <sup>3</sup> /h(CFM)	64000(37669)		62000(36492)		64000(37669)		
	Sound pressure level	dB(A)	70		70		70	
Net dimension (W×H×D)	mm	(1340×1635×790)×4		(1340×1635×790)×5		(1340×1635×790)×6		
	inch	(52-3/4×64-3/8×31-1/8)×4		(52-3/4×64-3/8×31-1/8)×5		(52-3/4×64-3/8×31-1/8)×6		
Packing size (W×H×D)	mm	(1405×1805×855)×4		(1405×1805×855)×5		(1405×1805×855)×6		
	inch	(55-5/16×71-1/16×33-21/32)×4		(55-5/16×71-1/16×33-21/32)×5		(55-5/16×71-1/16×33-21/32)×6		
Net weight (220V)	kg	305×2+340×2		297+340×3		305+340×3		
	lbs	671×2+748×2		654.3+748×3		671+748×3		
Gross weight (220V)	kg	323×2+358×2		315+358×3		323+358×3		
	lbs	710.6×2+787.6×2		693+787.6×3		710.6+787.6×3		
Net weight (460V)	kg	334×2+369×2		326+369×3		334+369×3		
	lbs	734.8×2+811.8×2		717.2+811.8×3		734.8+811.8×3		
Gross weight (460V)	kg	361×2+396×2		353+396×3		361+396×3		
	lbs	794.2×2+871.2×2		776.6+871.2×3		794.2+871.2×3		
Operating temperature range	°F(°C)		Cooling: -5~48(23~118.4); Heating: -20~24(-4~75.2)					

Notes:

- Indoor temperature 27°C DB, 19°C WB; outdoor temperature 35°C DB; equivalent refrigerant piping length 7.5m with zero level difference.
- Indoor temperature 20°C DB; outdoor temperature 7°C DB, 6°C WB; equivalent refrigerant piping length 7.5m with zero level difference.
- Diameters given are those of the unit's stop valve.
- Sound pressure level is measured at a position 1m in front of the unit and 1.3m above the floor in a semi-anechoic chamber.



Aermec se reserva el derecho de efectuar, en cualquier momento, todas las modificaciones que considere necesarias para mejorar el producto, modificando eventualmente los datos técnicos correspondientes.

Aermec S.p.A.  
Calle Canal la Punta 8770, Bodega No 42  
Top Space, Renca - Santiago  
Tel. + 55 11 9 7559 4822